

Архангельск (8182)63-90-72  
 Астана (7172)727-132  
 Астрахань (8512)99-46-04  
 Барнаул (3852)73-04-60  
 Белгород (4722)40-23-64  
 Брянск (4832)59-03-52  
 Владивосток (423)249-28-31  
 Волгоград (844)278-03-48  
 Вологда (8172)26-41-59  
 Воронеж (473)204-51-73  
 Екатеринбург (343)384-55-89  
 Иваново (4932)77-34-06

Ижевск (3412)26-03-58  
 Иркутск (395)279-98-46  
 Казань (843)206-01-48  
 Калининград (4012)72-03-81  
 Калуга (4842)92-23-67  
 Кемерово (3842)65-04-62  
 Киров (8332)68-02-04  
 Краснодар (861)203-40-90  
 Красноярск (391)204-63-61  
 Курск (4712)77-13-04  
 Липецк (4742)52-20-81

Магнитогорск (3519)55-03-13  
 Москва (495)268-04-70  
 Мурманск (8152)59-64-93  
 Набережные Челны (8552)20-53-41  
 Нижний Новгород (831)429-08-12  
 Новокузнецк (3843)20-46-81  
 Новосибирск (383)227-86-73  
 Омск (3812)21-46-40  
 Орел (4862)44-53-42  
 Оренбург (3532)37-68-04  
 Пенза (8412)22-31-16

Пермь (342)205-81-47  
 Ростов-на-Дону (863)308-18-15  
 Рязань (4912)46-61-64  
 Самара (846)206-03-16  
 Санкт-Петербург (812)309-46-40  
 Саратов (845)249-38-78  
 Севастополь (8692)22-31-93  
 Симферополь (3652)67-13-56  
 Смоленск (4812)29-41-54  
 Сочи (862)225-72-31  
 Ставрополь (8652)20-65-13

Сургут (3462)77-98-35  
 Тверь (4822)63-31-35  
 Томск (3822)98-41-53  
 Тула (4872)74-02-29  
 Тюмень (3452)66-21-18  
 Ульяновск (8422)24-23-59  
 Уфа (347)229-48-12  
 Хабаровск (4212)92-98-04  
 Челябинск (351)202-03-61  
 Череповец (8202)49-02-64  
 Ярославль (4852)69-52-93

Киргизия (996)312-96-26-47

Россия (495)268-04-70

Казахстан (772)734-952-31

<https://anritsu.nt-rt.ru/> || [aus@nt-rt.ru](mailto:aus@nt-rt.ru)

# Optical connector inspection to ensure network performance

## 400x Digital Probe

### Video Inspection Probe G0306B

Dirty or damaged optical connectors can greatly effect network performance. Scratches, chips and contamination on optical fiber connector end faces reduce transmission quality and increase errors. This leads to additional I&M work and cost.

The Video Inspection Probe G0306B can reduce these issues by verifying the condition and cleanliness of connector end faces during the installation phase. The connector image and detailed PASS/FAIL status is displayed as defined by IEC 61300-3-35 ensuring quality and consistency from connector to connector, technician to technician. G0306B is available for the ACCESS Master MT9083x2 Series, Network Master Series  $\mu$ OTDR MT9090A, Network Master Pro MT1000A, Network Master Flex MT1100A and Windows based PCs.

- 400x digital probe
- USB 2.0/1.1 supported
- Drivers pre-installed
- Auto Pass/Fail analysis
- Multiple connector tips



### Automatic Pass/Fail Connector Analysis

- IEC 61300-3-35 based connector Pass/Fail standard – no extra software to buy.
- One button PDF report generation on the tester or PC.



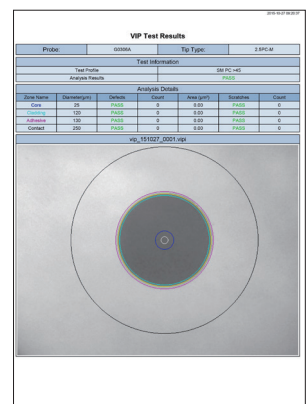
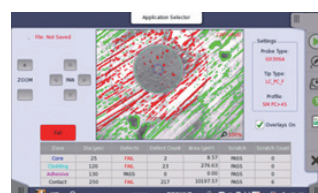
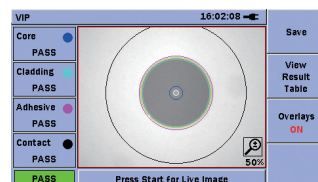
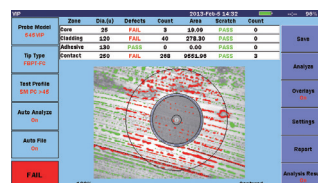
ACCESS Master Series MT9083x2



Network Master Pro MT1000A



$\mu$ OTDR Series MT9090A



PDF Report Output

## Easy Connection and Several Connector Tips

- Easy USB connection with drivers pre- installed on Anritsu testers
- Multiple connector tips included in base kit
- 65 degree tip support (Optional: LC type)

Universal (STANDARD Tips):



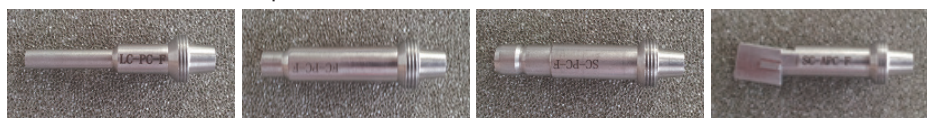
1.25mm PC Male      2.5mm PC Male      2.5mm APC Male

Bulk head (Option):



1.25mm 65 degree PC Female (LC)

Bulk head (STANDARD Tips):

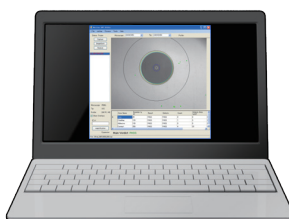
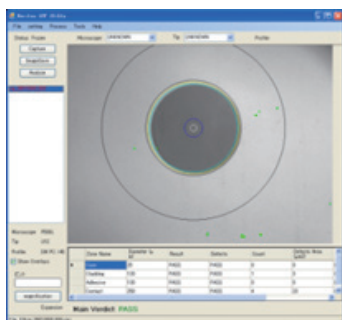


1.25mm PC Female (LC)    2.5mm PC Female (FC)    2.5mm PC Female (SC)    2.5mm APC Female (SC)

## Windows PC Analysis with MX900030A software

- Pass/Fail and PDF report generation on PC.
- Standard USB interface.
- No special drivers needed.

The MX900030A is a free software for PC analysis. The MX900030A is available from the Anritsu public web site.



Windows PC with MX900030A software

- Windows® 8 (32 bit, 64 bit)
- Windows® 7 (32 bit, 64 bit)
- Windows® XP SP3 (32 bit)

• Windows® is a registered trademark of Microsoft Corporation in the USA and other countries.

## Ordering Information

The product name and listed name may be different sometimes; contact your sales representative for more details.

Model/Order No.	Name
G0306B	Video Inspection Probe (x400)
	<b>Standard Accessories</b>
	Operation Manual (Printed)
	Soft Bag
	Seven Connector tips
	<b>Application parts</b>
H0360A	2.5PC-M
H0361A	1.25PC-M
H0362A	2.5APC-M
H0363A	LC-PC-F
H0364A	FC-PC-F
H0365A	SC-PC-F
H0366A	SC-APC-F
H0372A	E2000-PC-F
H0373A	FC-APC-F
H0374A	MU-PC-F
H0375A	ST-PC-F
H0376A	1.25APC-M
H0380A	LC65-PC-F

Архангельск (8182)63-90-72  
 Астана (7172)727-132  
 Астрахань (8512)99-46-04  
 Барнаул (3852)73-04-60  
 Белгород (4722)40-23-64  
 Брянск (4832)59-03-52  
 Владивосток (423)249-28-31  
 Волгоград (844)278-03-48  
 Вологда (8172)26-41-59  
 Воронеж (473)204-51-73  
 Екатеринбург (343)384-55-89  
 Иваново (4932)77-34-06

Ижевск (3412)26-03-58  
 Иркутск (395)279-98-46  
 Казань (843)206-01-48  
 Калининград (4012)72-03-81  
 Калуга (4842)92-23-67  
 Кемерово (3842)65-04-62  
 Киров (8332)68-02-04  
 Краснодар (861)203-40-90  
 Красноярск (391)204-63-61  
 Курск (4712)77-13-04  
 Липецк (4742)52-20-81

Магнитогорск (3519)55-03-13  
 Москва (495)268-04-70  
 Мурманск (8152)59-64-93  
 Набережные Челны (8552)20-53-41  
 Нижний Новгород (831)429-08-12  
 Новокузнецк (3843)20-46-81  
 Новосибирск (383)227-86-73  
 Омск (3812)21-46-40  
 Орел (4862)44-53-42  
 Оренбург (3532)37-68-04  
 Пенза (8412)22-31-16

Пермь (342)205-81-47  
 Ростов-на-Дону (863)308-18-15  
 Рязань (4912)46-61-64  
 Самара (846)206-03-16  
 Санкт-Петербург (812)309-46-40  
 Саратов (845)249-38-78  
 Севастополь (8692)22-31-93  
 Симферополь (3652)67-13-56  
 Смоленск (4812)29-41-54  
 Сочи (862)225-72-31  
 Ставрополь (8652)20-65-13

Сургут (3462)77-98-35  
 Тверь (4822)63-31-35  
 Томск (3822)98-41-53  
 Тула (4872)74-02-29  
 Тюмень (3452)66-21-18  
 Ульяновск (8422)24-23-59  
 Уфа (347)229-48-12  
 Хабаровск (4212)92-98-04  
 Челябинск (351)202-03-61  
 Череповец (8202)49-02-64  
 Ярославль (4852)69-52-93

Киргизия (996)312-96-26-47

Россия (495)268-04-70

Казахстан (772)734-952-31

<https://anritsu.nt-rt.ru/> || [aus@nt-rt.ru](mailto:aus@nt-rt.ru)