

Архангельск (8182)63-90-72  
 Астана (7172)727-132  
 Астрахань (8512)99-46-04  
 Барнаул (3852)73-04-60  
 Белгород (4722)40-23-64  
 Брянск (4832)59-03-52  
 Владивосток (423)249-28-31  
 Волгоград (844)278-03-48  
 Вологда (8172)26-41-59  
 Воронеж (473)204-51-73  
 Екатеринбург (343)384-55-89  
 Иваново (4932)77-34-06

Ижевск (3412)26-03-58  
 Иркутск (395)279-98-46  
 Казань (843)206-01-48  
 Калининград (4012)72-03-81  
 Калуга (4842)92-23-67  
 Кемерово (3842)65-04-62  
 Киров (8332)68-02-04  
 Краснодар (861)203-40-90  
 Красноярск (391)204-63-61  
 Курск (4712)77-13-04  
 Липецк (4742)52-20-81

Магнитогорск (3519)55-03-13  
 Москва (495)268-04-70  
 Мурманск (8152)59-64-93  
 Набережные Челны (8552)20-53-41  
 Нижний Новгород (831)429-08-12  
 Новокузнецк (3843)20-46-81  
 Новосибирск (383)227-86-73  
 Омск (3812)21-46-40  
 Орел (4862)44-53-42  
 Оренбург (3532)37-68-04  
 Пенза (8412)22-31-16

Пермь (342)205-81-47  
 Ростов-на-Дону (863)308-18-15  
 Рязань (4912)46-61-64  
 Самара (846)206-03-16  
 Санкт-Петербург (812)309-46-40  
 Саратов (845)249-38-78  
 Севастополь (8692)22-31-93  
 Симферополь (3652)67-13-56  
 Смоленск (4812)29-41-54  
 Сочи (862)225-72-31  
 Ставрополь (8652)20-65-13

Сургут (3462)77-98-35  
 Тверь (4822)63-31-35  
 Томск (3822)98-41-53  
 Тула (4872)74-02-29  
 Тюмень (3452)66-21-18  
 Ульяновск (8422)24-23-59  
 Уфа (347)229-48-12  
 Хабаровск (4212)92-98-04  
 Челябинск (351)202-03-61  
 Череповец (8202)49-02-64  
 Ярославль (4852)69-52-93

Киргизия (996)312-96-26-47

Россия (495)268-04-70

Казахстан (772)734-952-31

<https://anritsu.nt-rt.ru/> || [aus@nt-rt.ru](mailto:aus@nt-rt.ru)

# Autofocus Video Inspection Probe G0382A

## Automated Optical Connector Inspection to Ensure Network Performance

Dirty or damaged optical connectors greatly effect network performance. Contamination, scratches and chips on optical fiber connector end faces reduce transmission quality and increase network transmission errors leading to additional I&M work, cost and missed schedules.

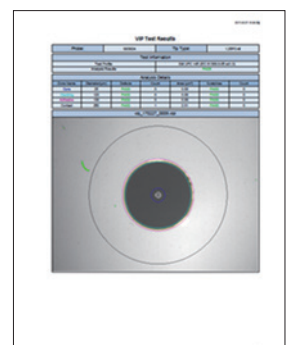
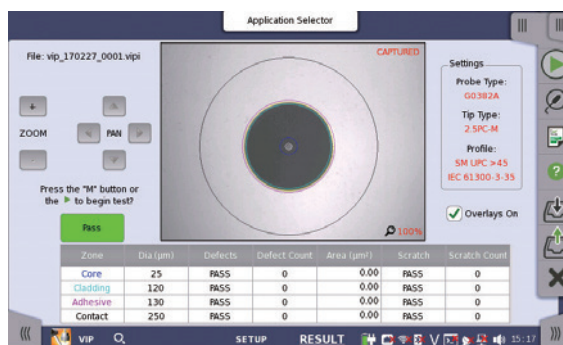
The Autofocus Video Inspection Probe G0382A eliminates these issues by verifying the condition and cleanliness of connector end faces during the installation phase where they are easily corrected. Complete connector inspection is performed quickly and automatically with the press of a button including: auto-focus, image centering, analysis and image capture. The detailed PASS/FAIL status as defined by IEC 61300-3-35 is displayed ensuring quality and consistency from connector to connector and technician to technician. G0382A is available for the Network Master Pro MT1000A, Network Master Flex MT1100A and Windows based PCs.

### Key Features

- Highest speed measurement with fully automated one-button operation
  - Automated focus
  - Automated image centering
  - Automated image capture
  - Automated analysis
- Easy to read LED indicator displaying status
- Compact and light weight
- Wide range of adaptors available



Available for MT1000A and MT1100A  
 \*Shown with MT1000A



Simple User Interface and Report Generation

# High Speed Measurement and Easy to Read LED Indicator

High speed measurement: Automatic image centering, focusing and analyzing with good image quality  
 Results LED: Easy to read Pass (green)/Fail (red) indicator



Pass



Fail



Activity Status

## Flexible Operation with Multiple Connector Adaptors Available\*

Easy USB connection with software pre-installed on MT1000A/MT1100A, provided for PC.  
 Multiple connectors tips included with base kit  
 (\* Additional tips available – please contact your local Anritsu sales person for details)

### Standard TIPS



## Specifications

Magnification	400x with 7" monitor
Resolution	1.0 μm/pixel
Focus	Automatic
Power	2 W
Interface	USB 2.0
Dimensions and Mass	182 (W) × 25 (H) × 48 (D) mm, 152 g
Temperature	Operation: -10° to +50°C, Storage: -40° to +70°C
EMC	EN61326-1
Vibration/Shock proof	MIL-T-28800E (Class3)
Legal restriction	CE & RCM Certificated, RoHS & WEEE compliant
Supported Products	MT1000A/MT1100A , PC for Windows*

\*: Windows 7, 8 and 10 support with Autofocus VIP Software MX900031A.

## Ordering Information

Please specify the model/order number, name and quantity when ordering.  
 The names listed in the chart below are Order Names. The actual name of the item may differ from the Order Name.

Model/Code	Name
G0382A	Autofocus Video Inspection Probe
	<b>Standard Accessories</b>
	Soft Case
	7 Tips
	Quick Reference Guide

\* Operation Manual and Autofocus VIP Software (For PC) MX900031A available from the Anritsu public Web site.



Easy report generation on a PC using MX900031A.

**Архангельск** (8182)63-90-72  
**Астана** (7172)727-132  
**Астрахань** (8512)99-46-04  
**Барнаул** (3852)73-04-60  
**Белгород** (4722)40-23-64  
**Брянск** (4832)59-03-52  
**Владивосток** (423)249-28-31  
**Волгоград** (844)278-03-48  
**Вологда** (8172)26-41-59  
**Воронеж** (473)204-51-73  
**Екатеринбург** (343)384-55-89  
**Иваново** (4932)77-34-06

**Ижевск** (3412)26-03-58  
**Иркутск** (395)279-98-46  
**Казань** (843)206-01-48  
**Калининград** (4012)72-03-81  
**Калуга** (4842)92-23-67  
**Кемерово** (3842)65-04-62  
**Киров** (8332)68-02-04  
**Краснодар** (861)203-40-90  
**Красноярск** (391)204-63-61  
**Курск** (4712)77-13-04  
**Липецк** (4742)52-20-81

**Магнитогорск** (3519)55-03-13  
**Москва** (495)268-04-70  
**Иркутск** (395)279-98-46  
**Мурманск** (8152)59-64-93  
**Набережные Челны** (8552)20-53-41  
**Нижний Новгород** (831)429-08-12  
**Новокузнецк** (3843)20-46-81  
**Новосибирск** (383)227-86-73  
**Омск** (3812)21-46-40  
**Орел** (4862)44-53-42  
**Оренбург** (3532)37-68-04  
**Пенза** (8412)22-31-16

**Пермь** (342)205-81-47  
**Ростов-на-Дону** (863)308-18-15  
**Рязань** (4912)46-61-64  
**Самара** (846)206-03-16  
**Санкт-Петербург** (812)309-46-40  
**Саратов** (845)249-38-78  
**Севастополь** (8692)22-31-93  
**Симферополь** (3652)67-13-56  
**Смоленск** (4812)29-41-54  
**Сочи** (862)225-72-31  
**Ставрополь** (8652)20-65-13

**Сургут** (3462)77-98-35  
**Тверь** (4822)63-31-35  
**Томск** (3822)98-41-53  
**Тула** (4872)74-02-29  
**Тюмень** (3452)66-21-18  
**Ульяновск** (8422)24-23-59  
**Уфа** (347)229-48-12  
**Хабаровск** (4212)92-98-04  
**Челябинск** (351)202-03-61  
**Череповец** (8202)49-02-64  
**Ярославль** (4852)69-52-93

**Киргизия** (996)312-96-26-47

**Россия** (495)268-04-70

**Казахстан** (772)734-952-31